

Welcome to Jomala!

Information for new residents of Jomala municipality on Åland



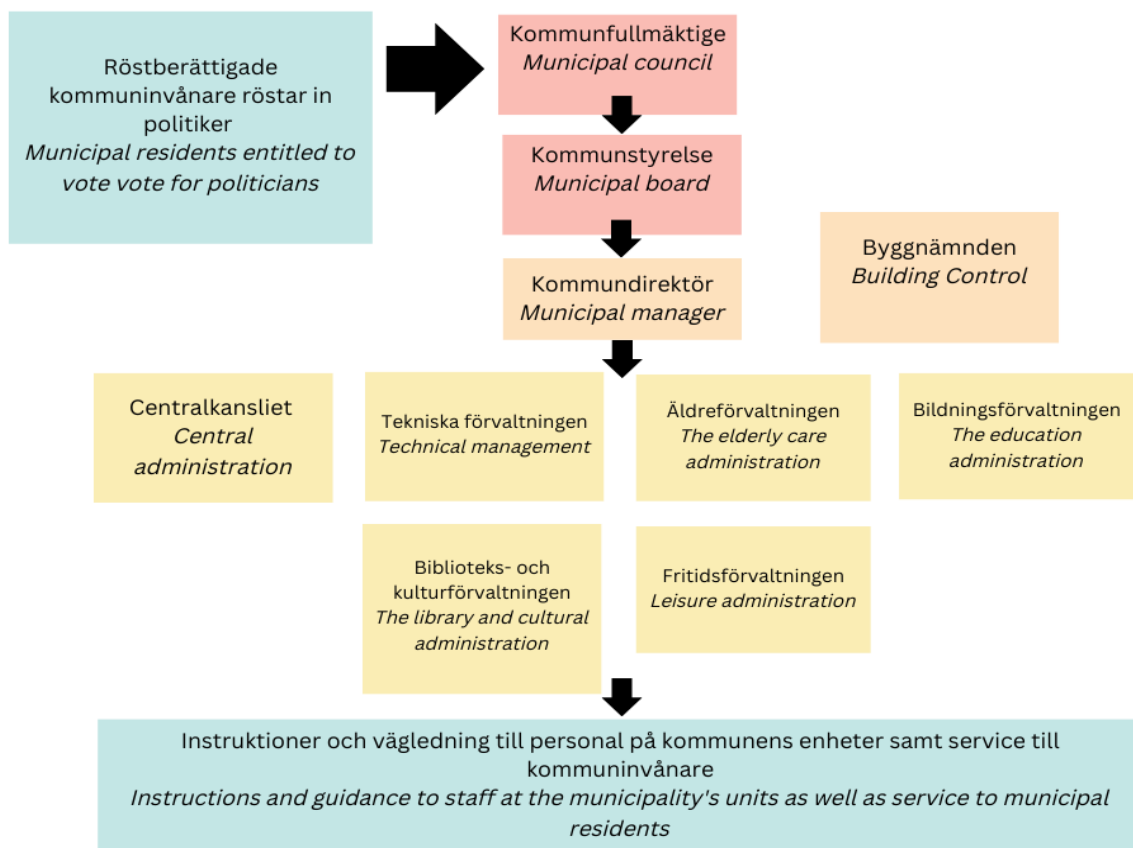
Åland and municipalities

Welcome to Åland and Jomala! This brochure is a first introduction to Jomala municipality for those who are new residents and want to get to know the local community.

Åland is a Swedish-speaking, self-governed part of Finland and is divided into sixteen autonomous municipalities. Jomala is one of these. The municipality is responsible for ensuring that municipal services; childcare, school (grade 1-9), elderly care, land use, construction, infrastructure, library, culture and leisure function within the municipality's borders. The municipality is governed by elected politicians who are elected every four years. Under the politicians, officials and workers in various sectors are then subordinated.

Jomala Municipality

Jomala municipality has several different sectors and people in different positions who work in these. The municipality is also a member of a few municipal collaborations, so-called municipal associations. In brief, the structure of the organization looks as below.



The politicians in the municipal council are elected for a four-year term and choose their own municipal executive board to implement their decisions. You are entitled to vote in the municipal election if you 1) reach the age of 18 no later than on election day, 2) has the municipality as your municipality of residence on 1 September of the election year in accordance with the *Lag om hemkommun* (11.3.1994/201) and 3) has Åland's right of domicile. However, a person who does not have Åland's right of domicile may be allowed to vote if they

have had a municipality in the province as their municipality of residence for one year immediately preceding the election day and meets the requirements of points one and two. You can read more about the election and how to vote on www.val.ax.

The protocols from the municipal council, the municipal executive board and the building committee can be found on the municipality's website. If you have questions about any individual decision, you can contact the municipal secretary or the municipal manager.

Under the municipal politicians work about 300 officials and workers. The municipality's senior official is the municipal manager.

Municipal services

The municipality is responsible for various services to the residents. Below is a brief description of the services Jomala municipality provides for its residents. There is also a lot of up-to-date information on the municipality's website, which can be found on www.jomala.ax. The website can be translated by clicking the "translate" button in the upper right corner of the website.



The municipal office found at Godbyvägen 448.

Childcare and child home care allowance

The municipality has six daycares spread evenly across the municipality. They are called Trollsländan, Gottby daycare, Sviby daycare, Österkulla daycare, Överby daycare and Vikingen. To find out more about the different daycares, how to apply for a daycare spot and daycare fees, you can contact the municipality's childcare manager.

If you have your municipality of residence on Åland, you can receive child home care allowance. The child home care allowance is financial support for guardians whose children are under three years of age and do not attend kindergarten. To find out more about the different child home care allowances and what you are entitled to, you can contact the office secretary at the education administration. The contact information can be found on our website.

School

Jomala municipality has two schools with grades 1-6. Södersunda school in the municipality's western district and Vikingaåsen school in the municipality's eastern district. Next to Vikingaåsen school is Kyrkby secondary school with grades 7-9, which Jomala has in common with four other municipalities in southern Åland. If you have initial questions about school, you can contact the schools' joint principal or the municipality's head of education.

Elderly care

Jomala municipality's care for the elderly consists of home services, accommodation services that the municipality buys from other institutions and support to people who choose to care for their relatives themselves.

When you or a loved one are unable to do the tasks of everyday life due to reduced functional capacity due to age, you are entitled to help. Home services can include a security telephone and food service or just help with everyday life tasks. If you can no longer live at home, the municipality has an obligation to arrange housing services, i.e. you can move to a larger unit that has healthcare staff around the clock. If relatives take care of a person over the age of 65 who needs round-the-clock care and supervision, you may be entitled to monetary support.

For all questions concerning elderly care, contact the municipality's elderly care manager.

Jomala municipality also has an activity coordinator who both arranges events that are open to all municipal residents, but who can also help with individualized activities for elderly people who live at home. Contact the activity coordinator if you have suggestions for activities or need some help along the way to get out among people!

Integration

The integration work in Åland is divided between several actors. Jomala municipality works to ensure that all immigrants feel at home in Jomala. This is mainly realized through accessible municipal services, but the municipality can also guide individuals in need of integration to the right authorities.

According to the *Landskapslag (2012:74) om främjande av integration*, immigrants are entitled to a personal integration plan under certain circumstances. On the municipality's website there is an integration form for immigrants. The form is structured so that you provide contact information, other relevant personal information and tick the specific areas you are in need of guidance in. This form will then serve as a basis for an initial assessment where the individual and the municipality, either themselves or in agreement with other authorities, draw up a plan for how to proceed with the integration work.

You can also contact the municipal office if you have questions and concerns about Jomala municipality and its activities and we will give you the information you need.

Accommodation

The municipality has twelve rental apartments. You can contact the municipal office to join the housing queue, but unfortunately it is often long. We recommend that you search and apply for housing through the private market.

Building permits

If you want to construct buildings or other constructions within the municipality, permits are usually required, so-called building permits. It is the municipality's building committee that grants building permits. Building permits are time-bound and must therefore be implemented or extended within given deadlines, otherwise they will expire. Contact the municipality's building inspector to know more.

Water and drain

If you move into a home in Jomala municipality, you should contact the municipality to ensure that they have the information needed to be able to invoice your water consumption. Most properties have a water meter which numbers needs to be sent to the municipality at regular intervals in order to be able to invoice according to consumption. The municipality will notify you when it is relevant.

Roads and plowing

It is not uncommon for it to snow during the Åland winters. You should contact the municipality if you have questions about plowing or road conditions in general. The municipality is only responsible for the maintenance of the municipal streets and pedestrian and bicycle paths, but if you are unsure which road is the municipality's, it is always good to call.

Sanitation and waste

Jomala municipality urges all its residents to protect the nature we have around us. An important part of this is to follow the waste sorting recommendations issued by Mise, the municipality's waste management authority. See Mises's website for more information: <https://mise.ax/>.

Library and culture

In the Center of Jomala municipality - in Vikingagården at Godbyvägen 439 - there is a municipal library with a large selection of children's and adult literature as well as magazines.

When you get a library card, the first card is free and then you also get a PIN code that allows you to log in to the bibliotek.ax page. On this page you can reserve books and get access to electronic material, e.g., e-books and movies in different languages.

There is a selection of books in various languages at Jomala library, mainly literature for children and young people. You can also order books in other languages from the City Library or the Multilingual Library in Helsinki.

In the library's exhibition hall, art exhibitions are shown continuously, and various cultural events and activities are arranged. Read more about the library and cultural activities on the municipality's website and the Jomala Library & Culture FB page.

Leisure

If you are interested in sports, exercise and outdoor life, there is a lot to experience and do in your spare time in Jomala. There are two indoor halls (one with gym, climbing wall and squash hall), artificial grass, nice nature areas, ski tracks, jogging tracks, hiking trails and beaches.

Within the municipality there is also an active youth center that arranges various adventures for the municipality's young people. There are also several Jomala associations that offer different kinds of activities. See more about all this on the municipality's website.

The municipality's info letter

Jomala municipality sends out a municipal information sheet to the municipality's households almost monthly by mail. The info sheet contains current news and events within the municipality. You can also read the info sheet on the municipality's website.

Other authorities, actors and contact details

There are a number of actors who can play a key role in making people feel at home in Åland. Below you will find contact information for some of the relevant actors.

- **Jomala municipality** –Jomala offers the services described above. More information and contact details can be found on <https://www.jomala.ax/>.
- **Municipal social services k.f. (KST)** – offers social services that are not child or elderly care, such as social assistance and child welfare. More information and contact details can be found on <https://www.kst.ax/>.
- **AMS** – provides guidance in employment, education, and employment services. More information and contact details can be found on <https://www.ams.ax/>.
- **Ålands hälso- och sjukvård (ÅHS)** – responsible for health and medical services. More information and contact details can be found on <https://www.ahs.ax/>.
- **Medis** – offers courses in the Swedish language. More information and contact details can be found on <https://medis.ax/>.
- **Kompassen (Medis)** – Kompassen is an information office for immigrants. More information and contact details can be found on <https://medis.ax/svenska-for-i/kompassen-2>.
- **Magistraten** – the local state administration that manages population registration and can give personal identity codes to immigrants. More information and contact details can be found on <https://www.ambetsverket.ax/om-statens-ambetsverk-pa-aland/magistratsarenden>.
- **Social Insurance Institution of Finland (Kela)** – offers certain social security benefits. More information and contact details can be found on <https://www.fpa.fi/>.
- **Tax office** – here you can get tax cards and information about tax matters. More information and contact details can be found on https://www.skatt.fi/sv/skatteforvaltningen/kontaktooss/skattebyraer/alands_skattebyr/.

A warm welcome to Jomala municipality!